



THE PENNSYLVANIA CHAMBER ORCHESTRA

Yaniv Attar, Music Director

FALL 2021 NEWSLETTER

WHAT'S INSIDE?

**Request Free Tickets for
Students**

Group Ticket Discount

Free Concert Livestream

Handel's Messiah Returns

September Concert Photos

Upcoming PCO Events

Holiday Concert – Dec 12

Dance Together – Jan 30

Celebrate Together – May 8

**Notes from the PCO Board
President**

**Time, Talent & Treasure - A Call
for Support**

Connect with us

**The Pennsylvania Chamber
Orchestra**

119 S Fraser Street, Suite D

State College, PA 16801

814.234.8313

info@pachamberorchestra.org

PACHamberOrchestra.org

Newsletter costs offset in part by



Thank you!

FROM THE PODIUM

Dear PCO Family,

Last September, we were finally able to present our first in-person concert and it was such an incredible experience! A few days before the concert, we gathered at a local church to rehearse for the first time, and even before we started to play, you could see the look on everyone's faces, not to mention the burst of energy from the moment I gave the downbeat. All this excitement came to life when we moved to the Recital Hall and performed for you.

This challenging pandemic has taught all of us that the experience of live music is something that cannot be replaced by any other experience, from listening to a CD to watching a live stream. I am very excited about the rest of the season, especially the upcoming work with our principal clarinetist Anthony Costa on the Copland Clarinet Concerto, and a symphony by Louise Farrenc, a contemporary of Beethoven. She wrote incredible music!

This Covid period is continuing to provide many challenges for all of us, and I hope that as we approach this holiday season, you will continue to think of us and support us. Your generous support and presence in our performances ensures that your PCO will continue to make an impact in our community.

I can't wait to see you in our future concerts and remain musically yours.

Yaniv Attar
Conductor



FREE TICKETS FOR MIDDLE & HIGH SCHOOL MUSIC STUDENTS

Do you know any music students who would appreciate attending a Pennsylvania Chamber Orchestra concert? Thanks to a generous donation by Michael and Tonya Black, 26 great seats are now available at no cost for middle and high school music students for the January and May PCO concerts. Spread the word and help us to inspire the next generation of great musicians!

To request tickets, please fill out the online request form and read the requirements.

<https://pachamberorchestra.org/ticket-request>

Thank you, Michael and Tonya!

PCO NOW OFFERING GROUP TICKET DISCOUNT

You asked and we listened. A group ticket discount is now available for PCO season concerts! Receive 10% off ticket purchases of 10+ tickets for the January or May PCO season concerts by calling the Penn State Box Office at 814-863-0255.

FREE CONCERT LIVESTREAM AVAILABLE

Can't make it to the concert hall? Not comfortable sitting indoors with large groups? We have you covered. Tune in live during each PCO concert held at Penn State to join us virtually. Enjoy a high-quality concert experience created with multiple cameras around the orchestra and produced by CW Studios. The livestream will be available during concerts at pachamberorchestra.org/livestream and will be linked on Facebook.

CELEBRATE THE HOLIDAYS WITH THE PENNSYLVANIA CHAMBER ORCHESTRA

Enjoy a Pennsylvania Chamber Orchestra tradition with a performance of Handel's Messiah on Sunday, December 12 at 3pm at the Penn State Recital Hall. Join longtime favorite guest conductor Christopher Kiver and the Penn State Concert Choir as they perform this holiday masterpiece with the PCO for the first time since 2017.



BOARD OF DIRECTORS

Larry Mroz, President
 Arthur Curtze, Vice President
 Ron McGlaughlin, Secretary
 Susan Berbec, Treasurer
 michael black
 Rachael Hartman
 Lynn Hutcheson
 James Lyon
 Fritz Smith
 Nina Woskob
 Karen Blair Brand, Emeritus

ARTISTIC & ADMINISTRATIVE STAFF

Yaniv Attar, Music Director
 Rebekah K. O'Brien, Assistant
 Conductor
 Anna Skrupky, Executive Director
 Susan Kroeker, Personnel Manager
 Josie Stalcar, Administrative Intern



SEPTEMBER "EXPLORE TOGETHER" CONCERT WEEKEND HIGHLIGHTS



UPCOMING EVENTS

For full ticket and venue information, visit pachamberorchestra.org/ticketvenueinfo.

Holiday Concert: “Handel’s Messiah”

Sunday, December 12, 3 pm - Penn State Recital Hall
Christopher Kiver, Guest Conductor
Penn State Concert Choir



Season Concert 2: “Dance Together”

Sunday, January 30, 3 pm - Penn State Recital Hall
Anthony Costa, Clarinet
Anne Sullivan, Harp

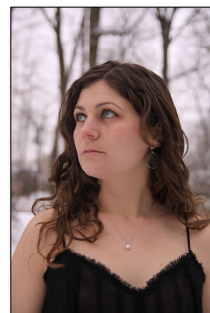
The Pennsylvania Chamber Orchestra’s second season concert “Dance Together” takes place on Sunday, January 30 at 3pm. Penn State faculty member, Anthony Costa, joins the PCO as soloist for Copland’s Clarinet Concerto. Also highlighted is local harpist, Anne Sullivan, for Debussy’s Sacred and Profane Dances. Finish the afternoon with Louise Farrenc’s Symphony No. 3 as the PCO performs this incredible symphony by a composer underappreciated in her own time.



Season Concert 3: “Celebrate Together”

Sunday, May 8, 3 pm - Penn State Recital Hall
Elisa Barston, Violin
Amy Sue Barston, Cello
Elizabeth Morgan, Piano

Join the Pennsylvania Chamber Orchestra for a mighty season finale and “Celebrate Together” on Sunday, May 8 at 3pm. Celebrate Mother’s Day, celebrate graduation, and celebrate an incredible season of music with this all-Beethoven program. Three very special soloists join the PCO to perform Beethoven’s “Triple” Concerto for Violin, Cello, and Piano in addition to the Overture to The Creatures of Prometheus and the beloved Symphony 7.



FROM THE BOARD PRESIDENT

Greetings! I hope this newsletter finds you well as Thanksgiving and the holiday season approach.

As Thanksgiving approaches, I can't help but reflect on how grateful we are to have the Pennsylvania Chamber Orchestra in our region. On behalf of everyone in the PCO family, I'd like to say THANK YOU for all you do and have done to ensure PCO continues to flourish this season – Together Again!

Together Again! This was a resonating theme as the musicians struck their first rehearsal notes ahead of the September concert... just hearing the musicians warm up gave me chills. Then, once they started the first piece, it really hit me... how long it'd been since I'd heard such lovely sounds... way too long PCO.

There certainly was a buzz of conversation during intermission and after the September concert. I'm also glad to report that the September audience counts for both the Recital Hall and via Livestream were very consistent with pre-pandemic attendance numbers. Together again we are!

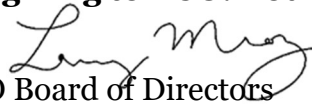
Might you have any feedback to share? If so, please reach out to a board member, email info@pachamberorchestra.org, or contact executive director Anna Skrupky.

As our community opens up and groups are gathering again, we are seeking opportunities to conduct brief "Get to Know PCO" presentations to help us increase awareness and excitement about PCO and the 2021-2022 Season. Video samplings of recent performances can also be offered, thanks to the high-quality video captured for the livestreams of recent performances. Please advise if you have a group we could connect with.

Would you or others like to get more involved? Looking forward, let us know if you would be interested in helping with or attending events such as 'Lunch with the Maestro', typically scheduled a few days before each concert; or other events.

We were saddened to hear of the loss of Pat Daugherty. Pat and his family had generously supported the PCO enormously by hosting and sponsoring the meals for the Serenade at The Tavern Restaurant, an annual PCO fundraising event for over two decades. The delightful hors d'oeuvres and multi-course dinner selections were always carefully selected to complement the theme of each small ensemble concert. Pat had been recognized the PCO's Amadeus Award many years ago for his long-time support and service. I always enjoyed visiting with Pat as the PCO Board gathered for dinner at The Tavern ahead of many board meetings before the pandemic. Our thoughts are with his family and friends. Pat will forever be in our hearts.

Finally, as you consider what organizations you'll support days and weeks ahead, even if you've already done something, **I hope you'll join me in giving to PCO. Your financial support is much needed and appreciated. Thank you.**


Larry Mroz, President, PCO Board of Directors



TIME, TALENT, AND TREASURE - A CALL FOR SUPPORT

Great performances require great amounts of time, talent, and treasure. Financial support (aka treasure) is an obvious requirement, but donations of time and talent are also vital to the success of our organization. If you or your family enjoy the programming that the PCO provides, in-person or online, please consider contributing to the orchestra in one of these three areas.

Donations of *any* size are greatly appreciated. We know that budgets vary and ask that you consider a donation in the amount that makes sense for you. If a financial gift is not possible, consider volunteering for the orchestra. We have a variety of volunteer opportunities available and would love to talk to you about how you may best support the organization.

You may also consider a lasting gift through the PCO Legacy Society. A planned gift using a beneficiary designation on your will is easy to establish. You also have the ability to name the PCO directly, or involve another organization, such as the Centre Foundation. Please contact us for more information.

Donations can be made online at PACChamberOrchestra.org/support, or the bottom of this page can be detached and mailed to the Pennsylvania Chamber Orchestra office at this address:

The Pennsylvania Chamber Orchestra
119 S Fraser St, Suite D
State College, PA 16801



THE PENNSYLVANIA
CHAMBER ORCHESTRA

119 S Fraser Street, Suite D
State College, PA 16801

Name _____

Address _____

City _____ State _____ Zip _____

Phone _____ Email _____

Donation ☐ \$2,500 ☐ \$1,000 ☐ \$500 ☐ \$250 ☐ \$100 ☐ Other amount _____

Card # _____ - _____ - _____ Exp ____/____ CVV _____

☐ Make this a recurring donation. (Initial by frequency) ____ Monthly ____ Quarterly (Jan, April, July, Oct)

Signature _____

☐ I would like more information about the PCO Legacy Society.

☐ I am interested in learning more about volunteer opportunities with the PCO.

Online donations are always accepted at PACChamberOrchestra.org/support

Please make checks payable to the Pennsylvania Chamber Orchestra or PCO.

Thank you for your support!

THE PENNSYLVANIA CHAMBER ORCHESTRA
119 S FRASER STREET, SUITE D
STATE COLLEGE, PA 16801



Non-Profit
Organization
U.S. Postage
PAID
Permit #133
State College, PA 16801